

A CAPITAL CAMPAIGN FOR
THE COMMUNITY FOREST OF THE
RENSSELAER PLATEAU

*Conservation
Through
Community*

Rensselaer Plateau Alliance



The Rensselaer Plateau

The Rensselaer Plateau is the fifth largest contiguous forest in New York State. The 118,000 acres of unfragmented forest are home to hundreds of wildlife species, including some that are rare due to habitat destruction and encroachment. A wide variety of other important ecological communities support both year round

resident species and thousands of migratory birds that find summer breeding and nesting places here. This landscape has long been used for traditional sports, such as hunting and fishing, and for recreational activities including hiking, nature observation, mountain biking and snowmobiling. The Plateau forests also protect and secure our fresh water supplies, providing drinking water for 70 percent of the people of Rensselaer County. In addition, carefully managed forest resources are an integral part of the region's economy, providing jobs for local citizens.



The Vision of the Rensselaer Plateau Alliance

One hundred years from now, we want to see the Rensselaer Plateau remain an unfragmented forest that contributes to the well-being of our residents and visitors and provides natural habitat for our wildlife. We hope to see an alliance of privately and publicly protected land that supports this vision, with a goal of conserving 18,000 acres by 2018.



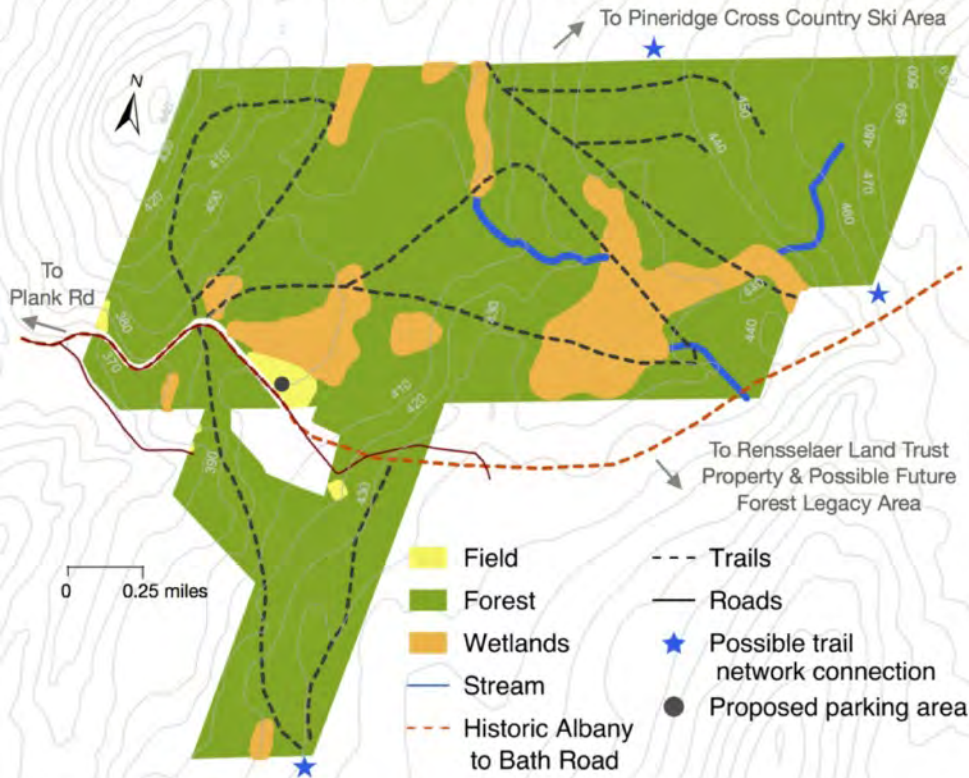
***Working cooperatively with groups & individuals,
RPA listens, inspires, leads & gets results.***

A Community Forest for the People

RPA's current priority is the Campaign for the Rensselaer Plateau Community Forest, a forested 350-acre parcel located in the town of Poestenkill. The Community Forest will provide educational, recreational, environmental, and economic benefits to the local and greater Rensselaer Plateau community, including: training programs for sustainable forest management, economic development opportunities through tourism and local forest products industry, children's educational programs, interpretive hikes, and wood walks. As a publicly accessible site, the Community Forest will include trails for recreational use with possible linkages to existing trails for hiking, biking, and snowmobiling. This demonstration forest will educate and encourage landowners to use conservation tools and techniques to manage their land and conserve it for themselves and future generations.



Rensselaer Plateau Community Forest Property Information



Location

A 350-acre forest, in Poestenkill, New York, adjacent to 750-acre cross-country ski area and proposed forest legacy projects. Located within a 20-minute drive of the Albany-Troy metropolitan area.

Characteristics

The forest consists of 95 percent forested area including a mix of hemlock, soft maple, hard maple, cherry, ash, beech, and conifers; 15-20 acres of open and forested wetlands; seasonal freshets and brooks. The property includes an extensive network of old logging roads that will be the basis for a trail system, remnants of the colonial era Albany-Boston Post Road, and numerous stone walls that defined pastures and fields from a bygone era of subsistence farming.

Campaign Goal: \$450,000

With more than \$250,000 already raised we are well on our way, but we need your **help to raise the final \$200,000:**

\$300K	Purchase Price		— \$450K
\$50K	Closing Costs (survey, appraisal and review, taxes)		— \$400K
\$100K	Start-up & Operation Costs (Parking lot, kiosk, maintenance, liability insurance, signage, annual taxes, community programs & staffing)		— \$300K
			— \$200K
\$450K	Total Campaign Goal		— \$100K
			— \$0

We have raised \$250,000:

- \$150K US Forest Service Grant (Community Forest & Open Space Program)
- \$100K Gift from Callanan Industries, Inc. (seller)



Wildlife

Moose, fox, bobcat, fisher, hare, turkey, hawk, ruffed grouse, duck, songbirds, turtle, native brook trout, and other wildlife call the Plateau their home.

Partners

Dyken Pond Environmental Education Center, Rensselaer Land Trust, Empire State Forest Products Assoc., New York Logger Training, Inc., Empire State Forestry Foundation, US Geological Survey, New York Forest Owners Association: Capital District Chapter, Tamokoce Wilderness Programs.



*Some things once gone,
cannot be replaced*

Take Action... Join Us Today

We all value our shared outdoor heritage, traditions, and the character of the landscape. The land, unfortunately, will not protect itself, nor will benign neglect conserve it. Please join us in raising the final \$200,000 towards our goal of \$450,000! We need your help in creating this amazing resource on the Rensselaer Plateau and are excited at the prospect of joining forces with you in this endeavor!

Help us with the Campaign:

Visit: www.rensselearplateau.org

Call: 518-712-9211

Email: info@rensselearplateau.org

Donations and Estate Planning

The work of the Rensselaer Plateau Alliance in the future will be made possible through the generosity of individuals who want to assure that this work continues. We welcome gifts of cash, appreciated securities, life insurance, bequests, and land. To learn more about how to maximize your charitable and financial planning goals, please contact us. Thank you for considering our cause in your plans.

Donations can be sent to:

Rensselaer Plateau Alliance
PO Box 790
Averill Park, NY 12018

Or Donate online at:

www.rensselearplateau.org/cf

Funding & Support provided by:



Highstead



Funding provided by US Forest Service Community Forest and Open Space Conservation Program, and Callanan Industries, Inc. Technical support provided by NYSDEC, The Conservation Fund and Highstead Foundation.

It is the policy of the RPA to provide equal opportunity in employment for all persons and to prohibit discrimination because of race, color, religion, sex, national origin, handicap, age, sexual orientation or status as a parent. The Rensselaer Plateau Alliance, Inc. is a nonprofit organization and is federally tax-exempt under section 501(c)(3). Contributions are tax deductible to the extent provided by the law. EIN: 94-3444825 A copy of the latest financial report filed with the NYS Department of State may be obtained by writing NYS Department of State, Office of Charities Registration, Albany, NY, 12232 or the Rensselaer Plateau Alliance

Rensselaer Plateau Alliance